



# Global Creative Review

Designed for Strength

**AECOM** Delivering a better world



# Foreword

Welcome to the **Global Creative Review 2025**. This review is more than a showcase of projects — it is a testament to the values and vision that guide our practice across the globe.

In every region and market we serve, we strive to bring a global perspective and translate it into unique, context-specific solutions for our clients and the communities they serve. Our work this year demonstrates how we harness the power of interdisciplinary expertise, pairing design excellence with technical depth and insight across every discipline.

The projects featured reflect our client-centric approach to design. Throughout the process, we listen, respond and ultimately co-create environments that align with our clients' goals. The places and spaces we create are deeply human-centered, designed to elevate the user experience, connection, and well-being. They embody our commitment to performance-driven results—delivering architecture that is not only visionary but also enduring, sustainable, and impactful.

This collection celebrates the dedication and creativity of our teams, the trust of our clients, and the transformative power of design to **deliver a better world**.



# Projects

<b>Port of Los Angeles Cruise Terminal</b> California, USA	<b>1</b>	<b>TerraCanada National Capital Area Component 1</b> Ontario, Canada	<b>28</b>
<b>Anta Sports Park</b> Shanghai, Mainland China	<b>4</b>	<b>Graham Greenway Underdeck</b> Florida, USA	<b>31</b>
<b>Royal Jubilee Maternity Hospital</b> Belfast, Northern Ireland	<b>8</b>	<b>Shell LOBP Office and Lab Building</b> Tarragona, Spain	<b>34</b>
<b>The Dynasty</b> Florida, USA	<b>11</b>	<b>Lake County Convention Center</b> Indiana, USA	<b>37</b>
<b>Hudson County Fan Plant</b> New Jersey, USA	<b>15</b>	<b>Area Control Center</b> Milan, Italy	<b>41</b>
<b>Medical Emergency Services Headquarters</b> L'Hospitalet de Llobregat, Spain	<b>18</b>	<b>Garnison Entrepôt Tempéré</b> Montreal, Canada	<b>44</b>
<b>Shell Office Building</b> Baar, Switzerland	<b>22</b>	<b>Galaxy Twin Towers</b> Shenzhen, Mainland China	<b>46</b>
<b>AECOM Chicago Office</b> Illinois, USA	<b>25</b>		

# Port of Los Angeles Cruise Terminal

Los Angeles, California, USA

**Disciplines:**

- Architecture
- Structures
- MEP
- Sustainability
- Ports & Marine Civil

**Status:**

In progress



The new cruise ship terminals at **The Port of Los Angeles** unite functionality, sustainability, and innovation while enhancing passenger experience and supporting efficient operations.

Passenger flow is streamlined through intuitive layouts, spacious check-in areas, efficient security checkpoints, luggage handling systems, and customs zones, reducing congestion and enabling smooth embarkation and disembarkation. Modern amenities, including comfortable waiting areas, retail, dining and entertainment, enhance the passenger journey.

Architecture inspired by Los Angeles culture and waterfront character creates a distinctive sense of place.



## Sustainability is central to the design.

Energy-efficient systems, renewable energy from solar panels, water conservation measures, and low-carbon materials reduce environmental impact. Intermodal connectivity is integrated through public transit access, pedestrian pathways, parking, ride-sharing options, and electric vehicle charging stations. Accessibility meets full compliance with the Americans with Disabilities Act.

The terminals are designed for resilience and flexibility, incorporating seismic safety measures, flood protection, and adaptable spaces to accommodate evolving cruise industry needs. Glass façades, landscaped areas, and waterfront promenades integrate the terminals into the coastal landscape, reinforcing the Port's role as both a civic landmark and a global gateway.



# Anta Sports Park

Shanghai, Mainland China

**Disciplines:**  
- Architecture  
- Landscape

**Status:**  
Unbuilt





The Amer Sports Center in Shanghai integrates landscape and architectural design for Amer Sports' global R&D headquarters and sports park, adjacent to the forthcoming ANTA Global Center.

Inspired by mountains, forests, and snowfields, the design translates natural topography into architectural form, reflecting the brand's connection with outdoor sports while shaping an immersive environment for employees, athletes and visitors.





A rooftop professional-grade ski slope, built with Snowflex material, authentically replicates snow conditions and supports safe, high-performance use. The roof functions as a product testing hub, allowing outdoor footwear, apparel, and cycling equipment to undergo live trials across simulated terrains.

It also acts as a brand experience platform, with a visible location for public engagement and immersive demonstrations, and as an event-ready venue, accommodating competitions, experiential marketing, and corporate events.



Anta Sports Park, Shanghai, Mainland China

At the heart of the building, a four-story atrium creates a dramatic, multifunctional space. The ground floor hosts a tournament-standard tennis arena with a modular system that allows quick reconfiguration for events, conferences, or daily operations.

By combining nature-inspired design with flexible, high-performance facilities, the Amer Sports Center position itself as a landmark for sports innovation and experiential engagement in Shanghai.



# Royal Jubilee Maternity Hospital

Belfast, Northern Ireland

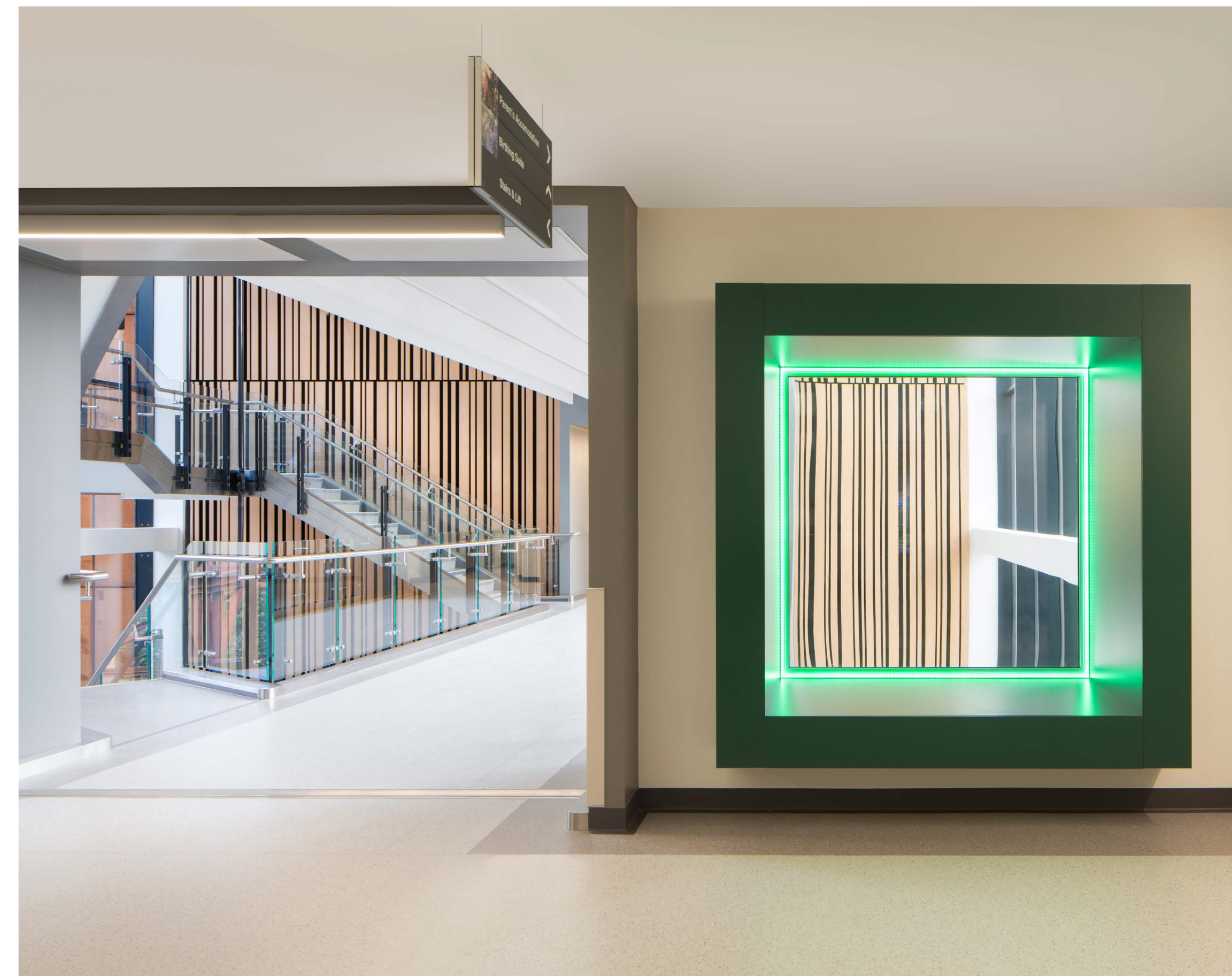
**Disciplines:**

- Architecture
- Civil and Structural Engineer
- Landscape Architect
- Planning Consultant
- Transport Consultant
- BREEAM Assessor
- Environmental Consultancy
- Principal Designer

**Status:**

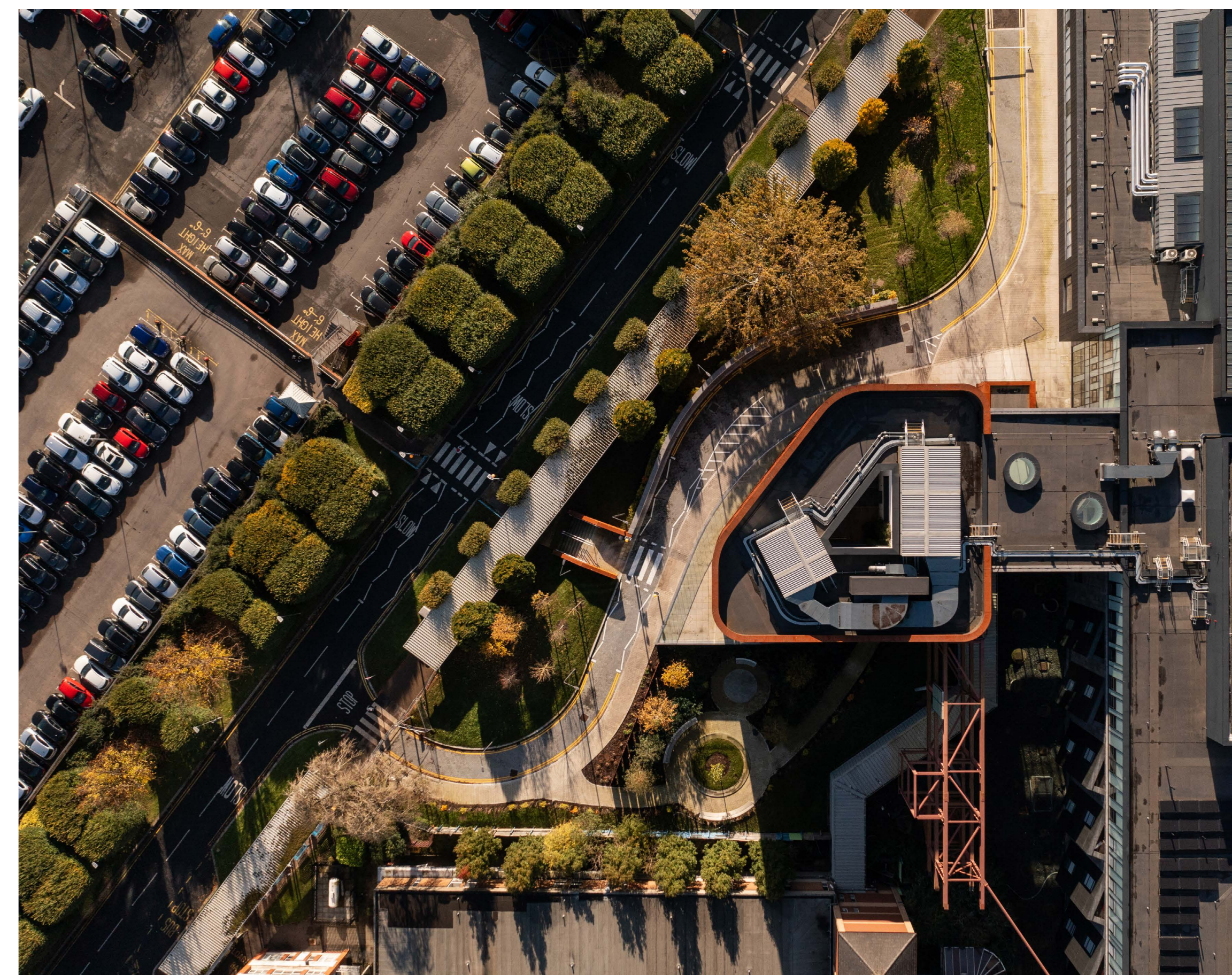
Built





Wellbeing and recovery are at the heart of **The Royal Jubilee Maternity Hospital** in Belfast. From conceptual design to construction, the mother, baby and supporting family members are placed at the forefront to aid recovery and reduce the length of stays.

The 17,000-square-meter building includes an Early Pregnancy Unit, Midwifery Led Unit, Delivery Ward, supporting Theatres, Maternity Ward, and Neonatal Intensive Care.





The three-storey building has a strong presence through its elevated site position and feature entrance façade. On arrival, the glazed atrium welcomes patients and visitors, providing clear wayfinding to pre- and postnatal facilities.

Full-height windows maximise light and views with electronic interstitial blinds, allowing adjustments, eliminating overlooking, and further enhancing wellbeing and recovery.

The new hospital links to other healthcare facilities within the Royal Belfast Trust estate.



# The Dynasty

Ocoee, Florida, USA

**Disciplines:**

- Planning
- Landscape Architecture
- Architecture
- Interiors

**Status:**

Unbuilt

**The Dynasty** in Ocoee, Florida is a first-of-its-kind mixed-use, sports-anchored vacation destination designed to bring together competition, entertainment, and community on a transformative scale.

The 160-acre campus will feature 13 state-of-the-art sports fields, more than 300,000 square feet of retail, dining, and entertainment, and over 1,100 hotel rooms - creating a destination that rivals Orlando's most iconic attractions.





Unlike traditional tournament venues built solely for athletes, The Dynasty is envisioned as a place for everyone. Public green spaces, a riverwalk, and flexible event venues will invite residents and visitors alike to gather, connect and celebrate beyond tournament weekends.

By dissolving traditional boundaries between "sports facility" and "town center," the design fosters social connections across demographic groups while providing economic opportunities for local businesses - creating a vibrant, equitable destination that strengthens community resilience.

By integrating technology, promoting wellness, and prioritizing the family experience, The Dynasty will set a new benchmark for athletic facilities that serve as true community catalysts rather than single-purpose venues.



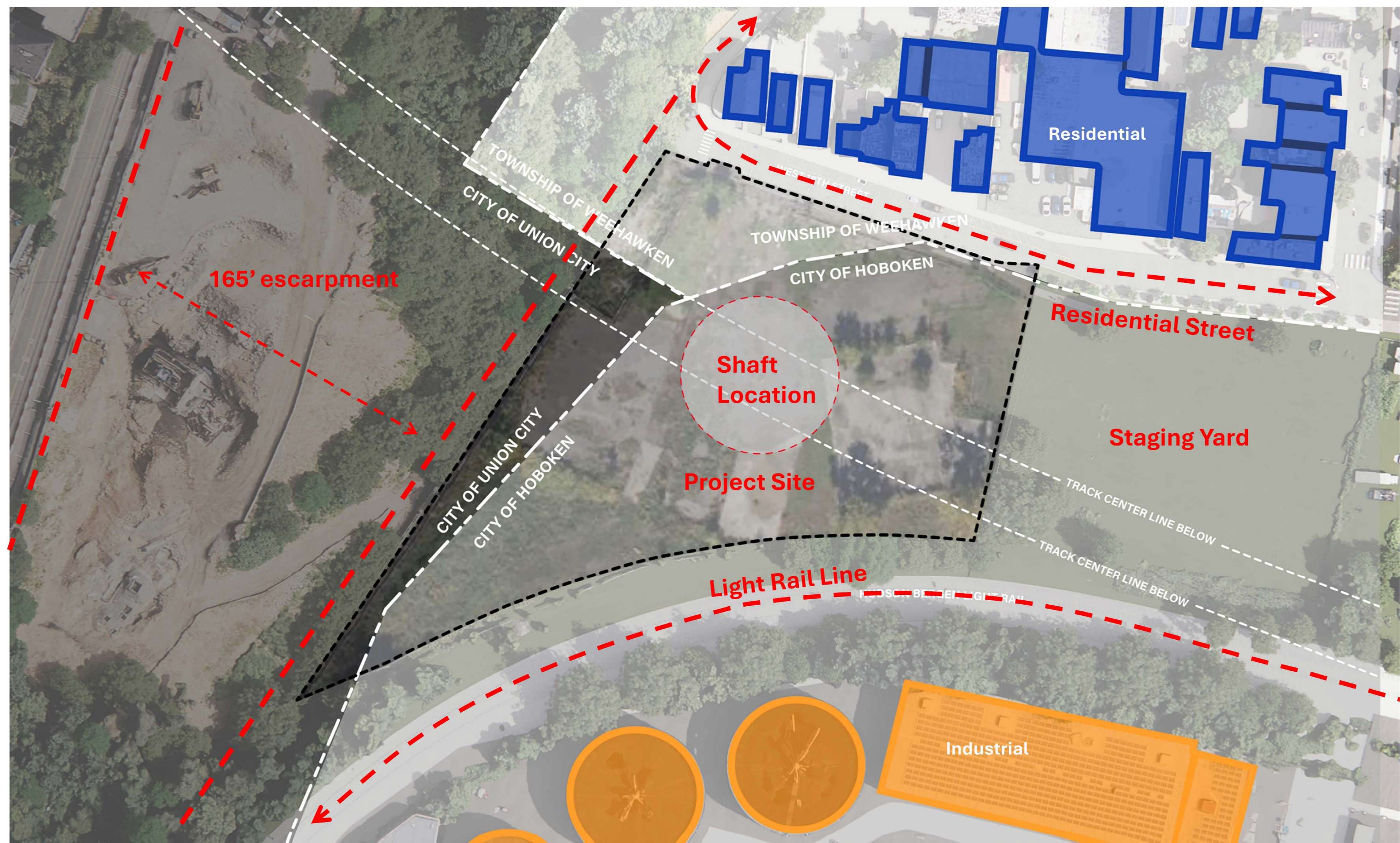
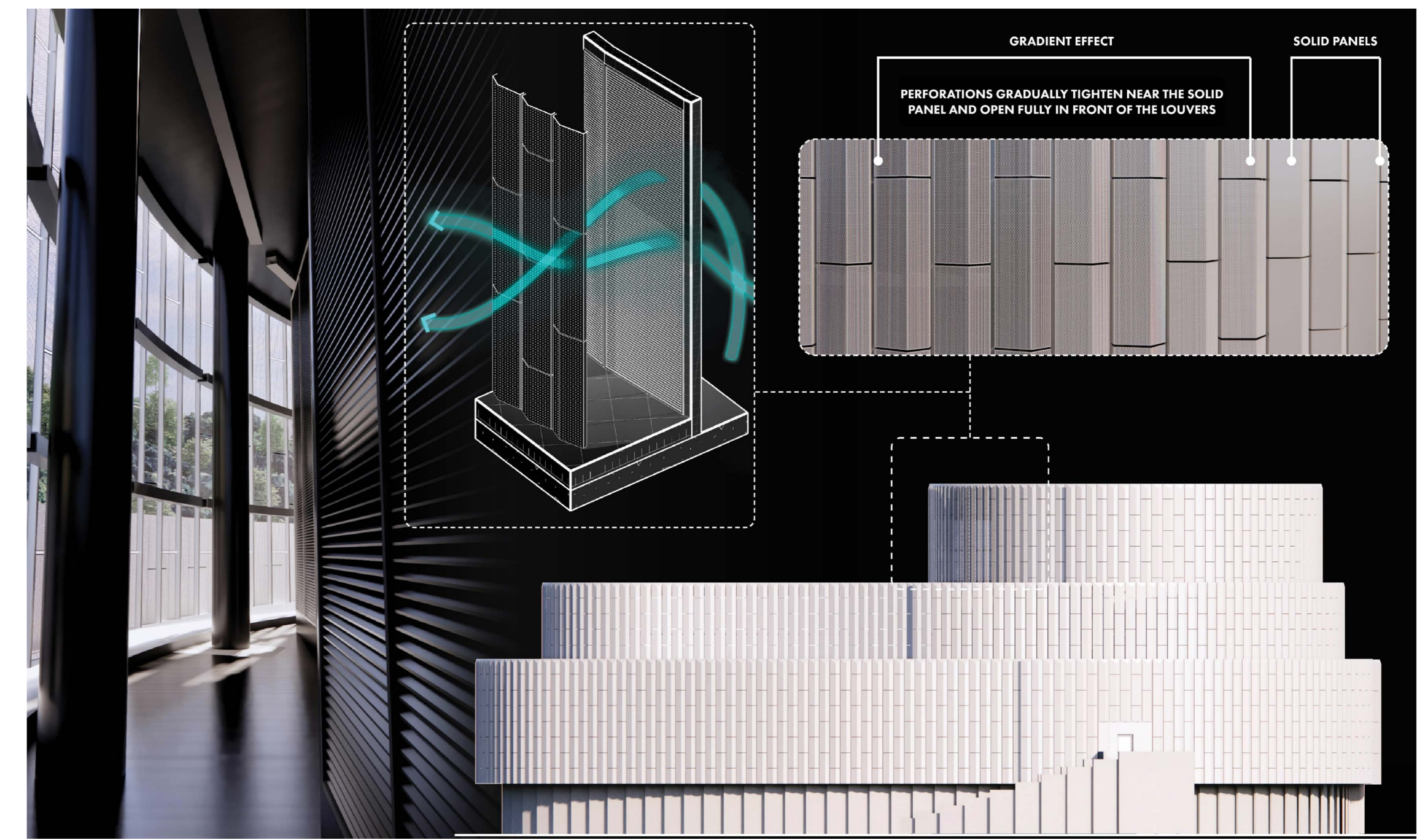
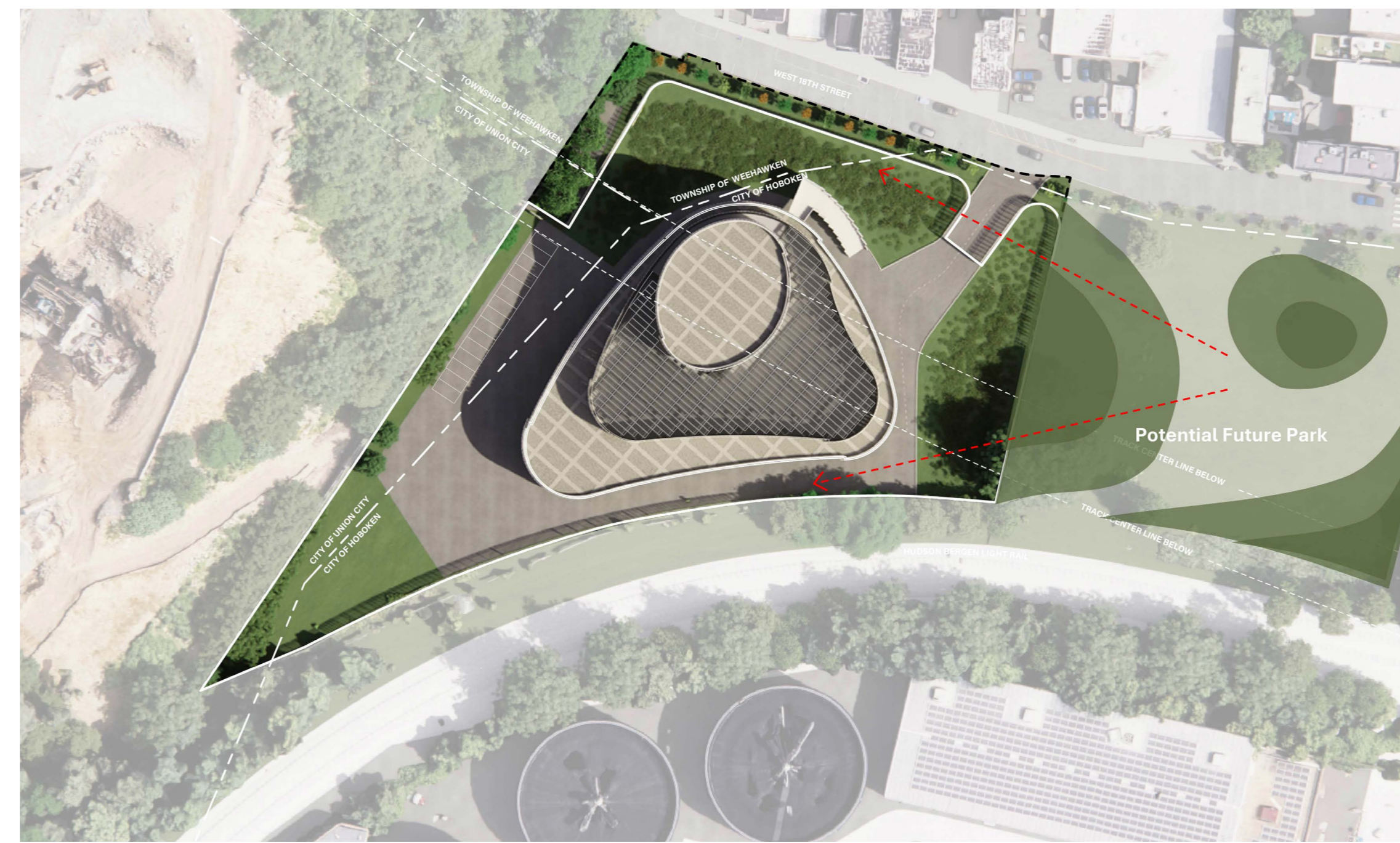
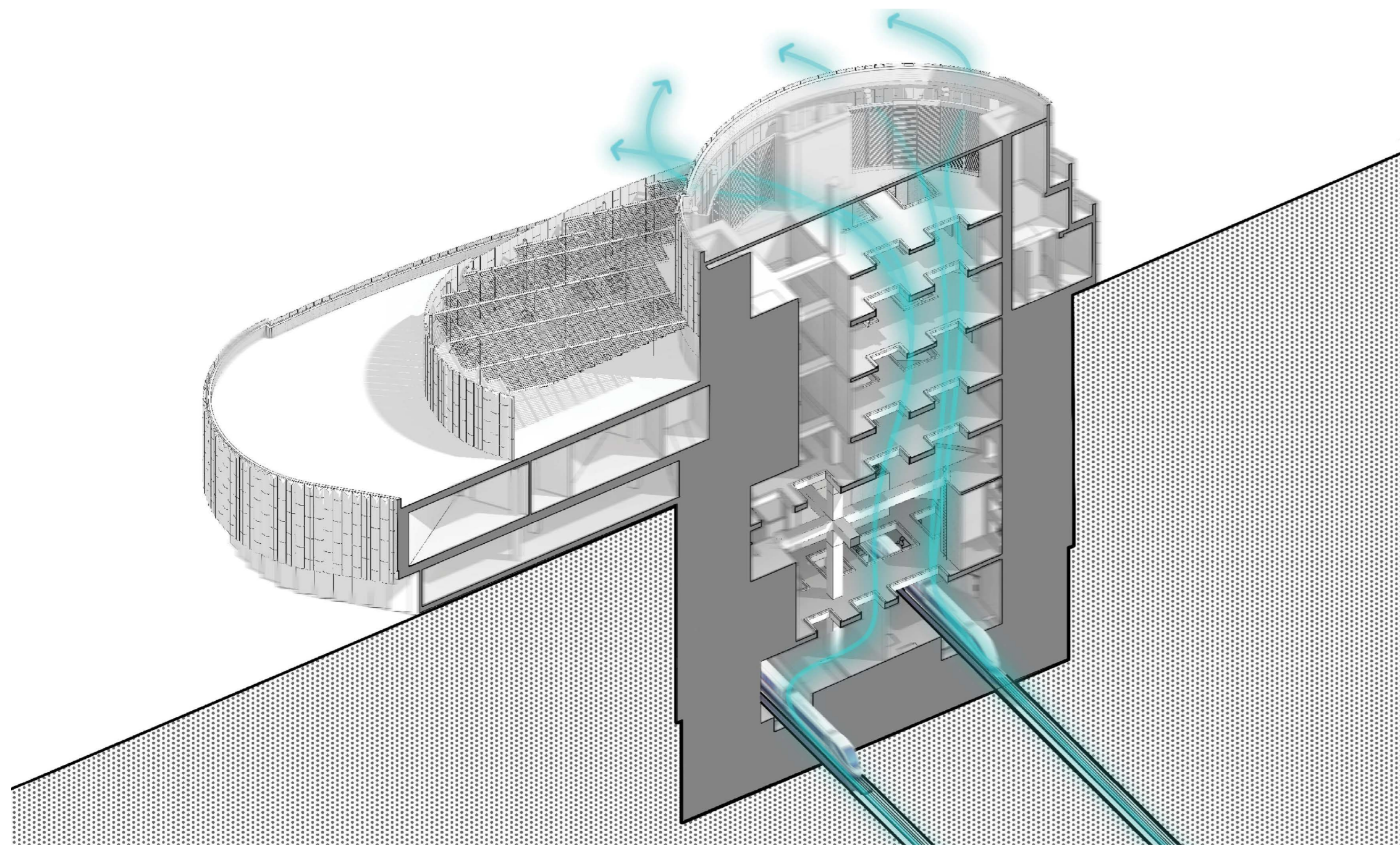
# Hudson County Fan Plant

Hoboken, New Jersey, USA

Disciplines:  
- Transportation infrastructure

Status:  
Unbuilt





New York City's Gateway Project is a major infrastructural undertaking for the region. It consists of creating two new train tunnels under the Hudson River linking New Jersey and Penn Station that increases capacity for Amtrak and New Jersey Transit.

**The Hudson County Fan Plant** provides essential ventilation for these tunnels, supporting safe and resilient operations for regional rail traffic.

Rising from an 80-foot-diameter shaft in a challenging lot between Hoboken and Weehawken, the fan plant sits amid industrial zones, residential neighborhoods, the Palisades escarpment, and a light rail line. Rather than imitating its surroundings, the building asserts its own identity as an autonomous urban sculpture.

The sculptural character emerges from addressing social, technical, and economic challenges. Massing peels southward to preserve daylight and views, while layered curvilinear forms optimize space and reduce enclosure costs.

A disciplined rainscreen of four panel types stiffens the façade, reduces embodied carbon, and animates the form with light and shadow. Functional louvers sit behind perforated panels, maintaining the sinuous façade while supporting mechanical needs.

Looking east, the design anticipates a future public park, positioning the fan plant as a civic anchor and sculptural terminus.

**The project is a fantastic demonstration of how critical infrastructure can enhance urban identity, create a sense of place, and support community pride.**



# Medical Emergency Services Headquarters

L'Hospitalet de Llobregat, Spain

**Disciplines:**

- Architecture
- Structures
- MEP
- Sustainability
- Civils

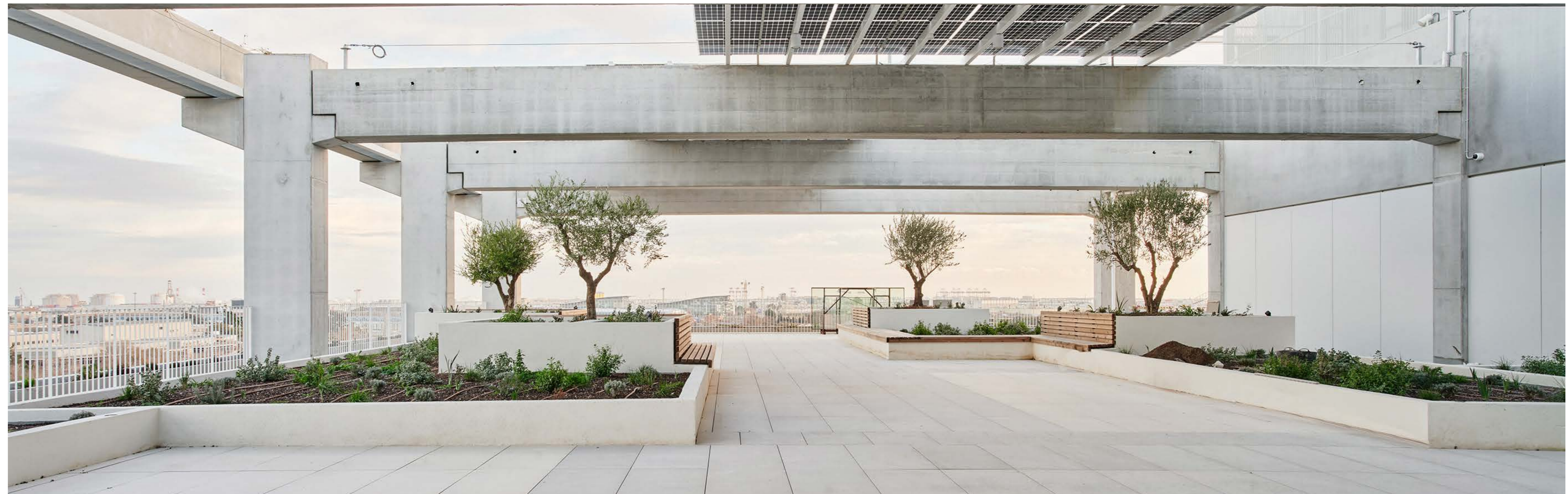
**Status:**

Built



The new **Medical Emergency System (SEM) Headquarters** in L'Hospitalet de Llobregat consolidates emergency operations into a 23,000-square-meter facility designed for speed, sustainability and long-term adaptability.

Part of a design competition awarded to AECOM in partnership with local architects b720, the project brought together architecture, structural, mechanical, electrical, plumbing, and sustainability expertise in a truly integrated approach.



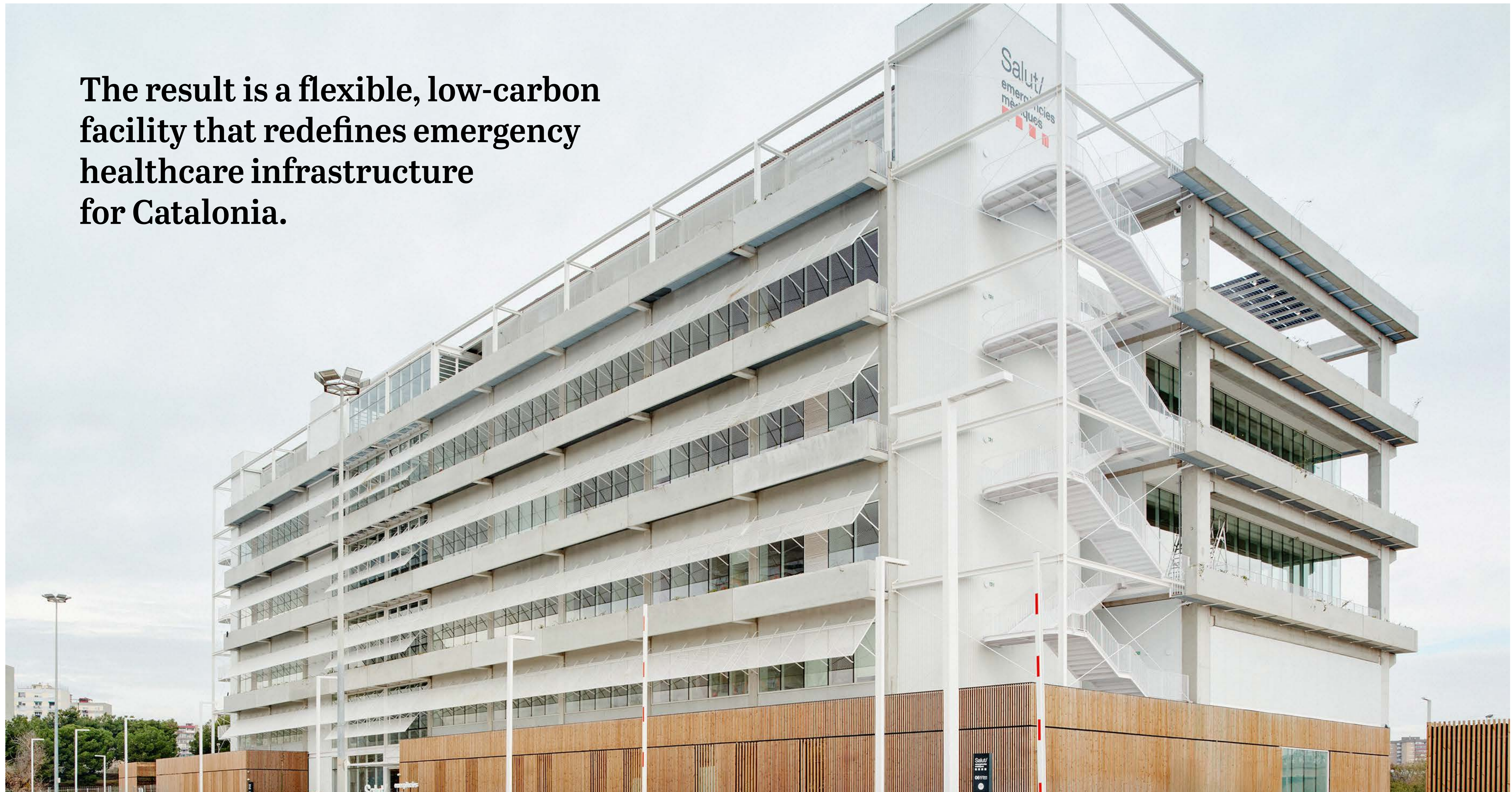
Delivered for Ferrovial-Climava in just eleven months using prefabricated and modular construction, the building integrates a 24-hour ambulance base, logistics center, simulation and training areas, emergency coordination suites, and administrative workspaces around a central bioclimatic courtyard. A column-free structural system ensures spaces can be reconfigured for future healthcare uses, strengthening operational resilience within the wider hospital campus.

Sustainability is embedded throughout, from passive strategies like daylight optimization and solar control to active measures such as integrated photovoltaic panels. With 86 percent occupied areas achieving daylight targets and natural ventilation enhancing interior comfort, the headquarters reduces carbon impact while improving staff wellbeing.



**Medical Emergency Services Headquarters, L'Hospitalet de Llobregat, Spain**

**The result is a flexible, low-carbon facility that redefines emergency healthcare infrastructure for Catalonia.**



# Shell Office Building

Baar, Switzerland

**Disciplines:**

- Workplace consultancy
- Architecture
- Interiors
- MEP
- Structure

**Status:**

Built





## Shell's new offices in Baar, Switzerland, provide a fresh home for the company's global branding team.

Spanning 1,200 square metres, the workplace brings creativity, innovation, and corporate culture together under one roof while reflecting the unique character of its Swiss setting.



Shared amenities, such as cafeteria, changing rooms, and green outdoor areas establish a welcoming daily experience, while laboratories and offices above enable high-performing research in a resilient, efficient layout. Natural light carefully oriented façades, and a balance of durable and colorful finishes enrich both performance and atmosphere.

**With its contemporary identity and human-centered approach, the building elevates its industrial surroundings, creating a place where innovation and people thrive side by side.**



# AECOM Chicago Office

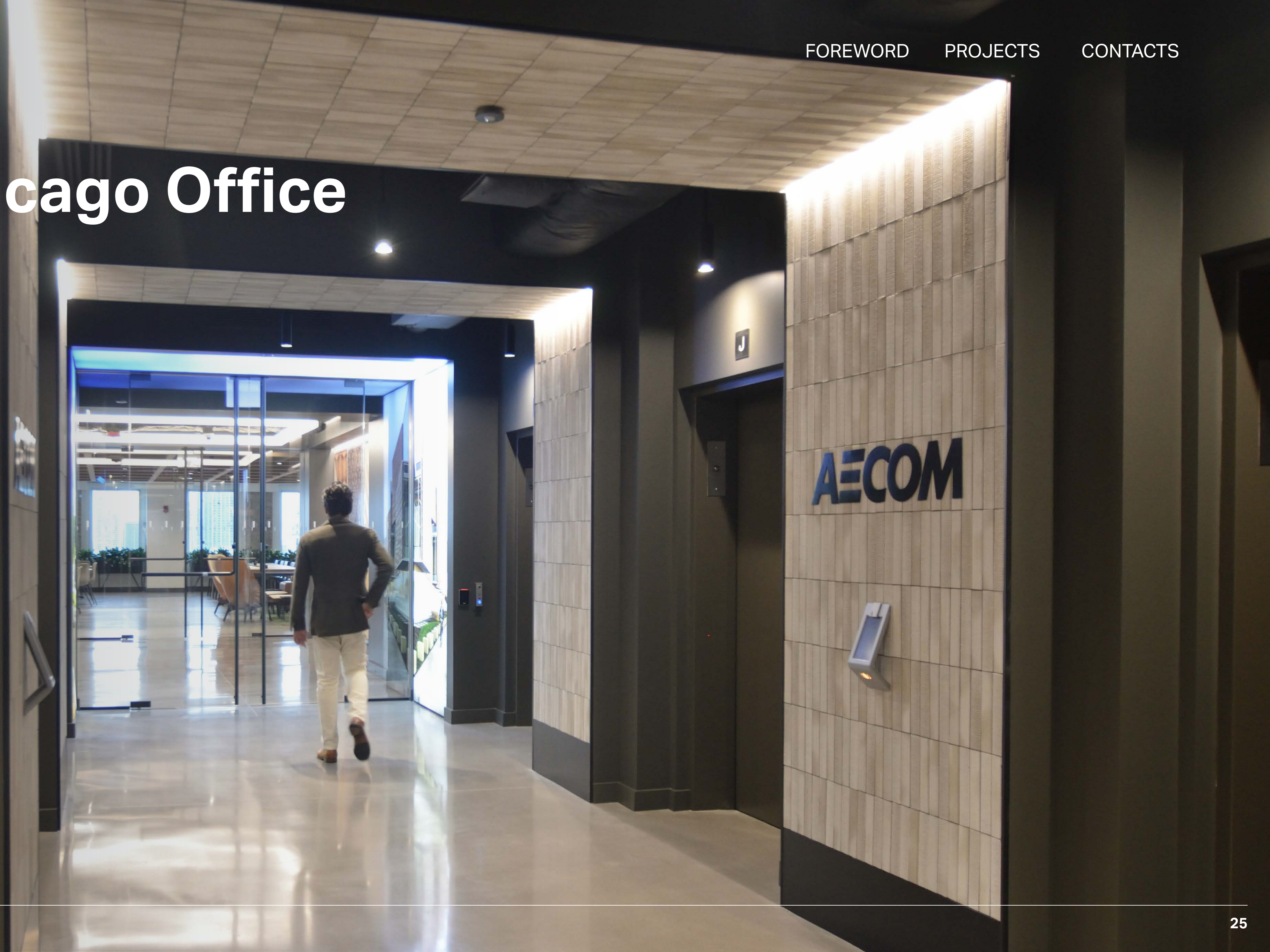
Chicago, Illinois, USA

**Disciplines:**

- Interiors
- MEPFP
- Change Management

**Status:**

Built



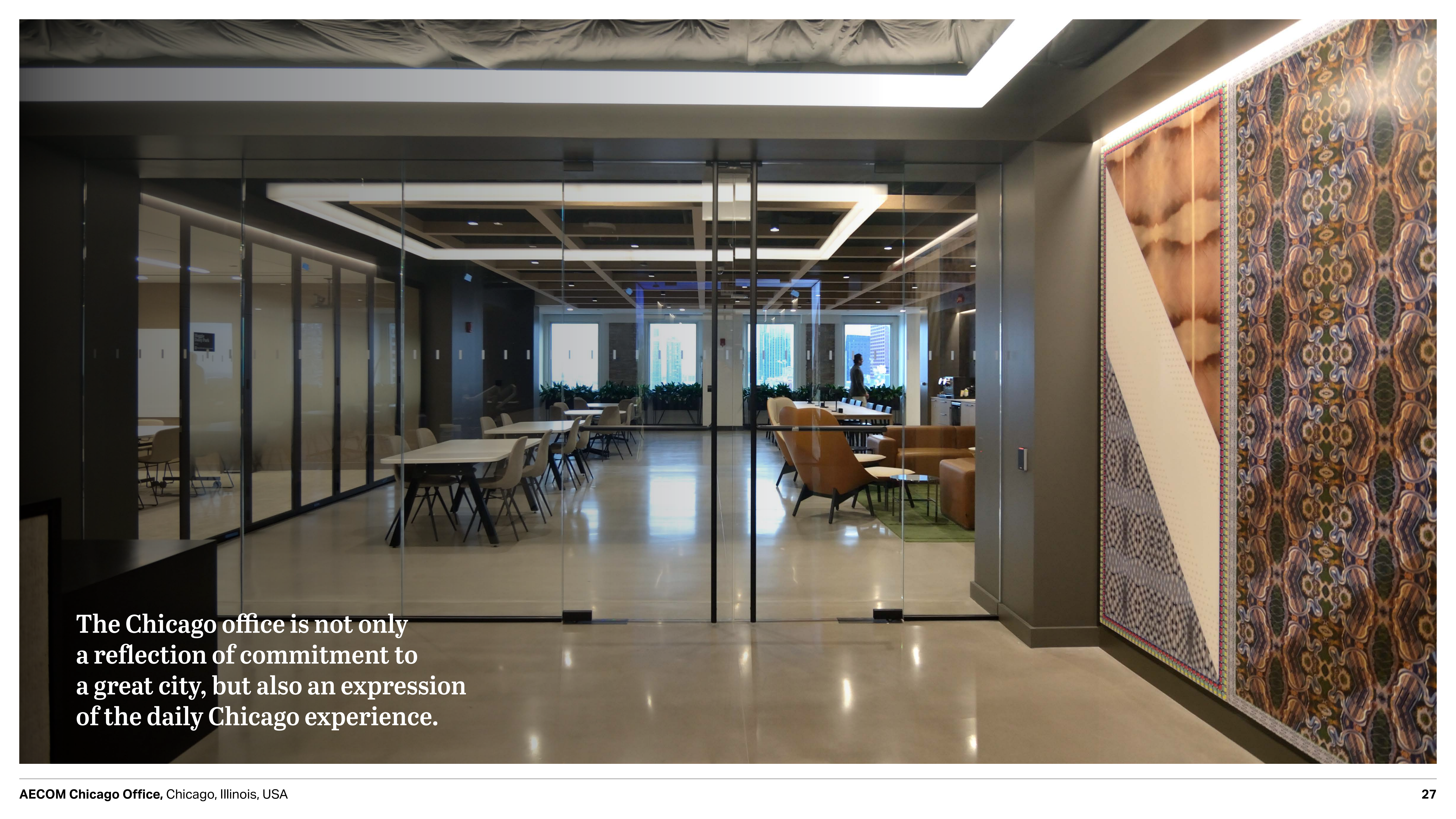


Our new **AECOM Chicago office**, located on the edge of the Loop and overlooking Millennium and Grant Parks, sits at the intersection of great architecture and the city's front lawn. Designed as a Collaborative Work Hub, the space supports daily work life, client engagement, and serves as a design community resource.

The layout follows a neighborhood planning strategy centralized around a social gathering space with access to daylight and premium views for all occupants. Single loop circulation reinforces connectivity, provides ease of movement through space, and openly connects each neighborhood back to the central gathering space.

From blocks of art, colorful work, and simple textures to reflective surfaces and masonry-like elements, the interior design serves as an extension of the city experience below. Users continue a journey of material exploration much like they do with street-level facades, windows, and artwork. Furniture is flexible yet comfortable, creating a feeling of welcome and refined through a textural palette of warm neutrals, wood tones, and park-like hues of green.



A wide-angle photograph of a modern office interior. The space is characterized by extensive glass walls and partitions, creating an open and bright atmosphere. In the foreground, a polished, light-colored floor reflects the overhead lighting. To the right, a decorative wall panel features a complex, colorful geometric pattern in shades of blue, green, and gold. The background shows several tables and chairs arranged for work or meetings, with large windows offering a view of a city skyline. The ceiling is modern, with recessed lighting and a grid pattern.

**The Chicago office is not only a reflection of commitment to a great city, but also an expression of the daily Chicago experience.**

# TerraCanada National Capital Area Component 1

Ottawa, Ontario, Canada

**Disciplines:**

- Architecture
- Laboratory design
- Landscape architecture
- Civil engineering
- Acoustical engineering
- Sustainability, carbon, resilience consulting
- Environmental consulting
- Indigenous engagement

**Status:**

Unbuilt





### **Laboratories Canada (LabsCanada)**

Building Canada into the world's leading hub for science and innovation, LabsCanada is investing \$3.7 billion to deliver built-to-last facilities that directly support key science priorities in public health, natural resource development, and regulatory enforcement.

### **TerraCanada Hub**

TerraCanada is one of five LabsCanada hubs. The TerraCanada Hub will bring together scientists and academia to sustainably develop the potential of Canada's resources and critical minerals, to strengthen Canada's resilience, sovereignty, and transformation to a low-carbon economy through collaborative research and innovation.

The TerraCanada Hub includes recently completed science facilities in Mississauga and Hamilton and our team is now realizing Component 1 of the Ottawa-based science facility, TerraCanada National Capital Area.



### Component 1

As part of the larger TerraCanada National Capital Area project, Component 1 will bring together the Canadian Nuclear Safety Commission (CNSC) and two groups from Natural Resources Canada, CanmetMINING and Geological Survey of Canada (GSC). Utilizing shared science and laboratory spaces, these groups will deliver programs focused on mining practices, resource efficiencies, environmental compliance, and more.

Adhering to the existing National Research Council's master plan, Component 1's landscape design includes over 25,000 meters squared of public space and plaza. The design team also worked closely with Indigenous Partners—Nvision, Two Row Architects, and Smoke Architecture—to braid various concept elements into a holistic design.



# Graham Greenway Underdeck

Miami, Florida, USA

Disciplines:  
- Architecture

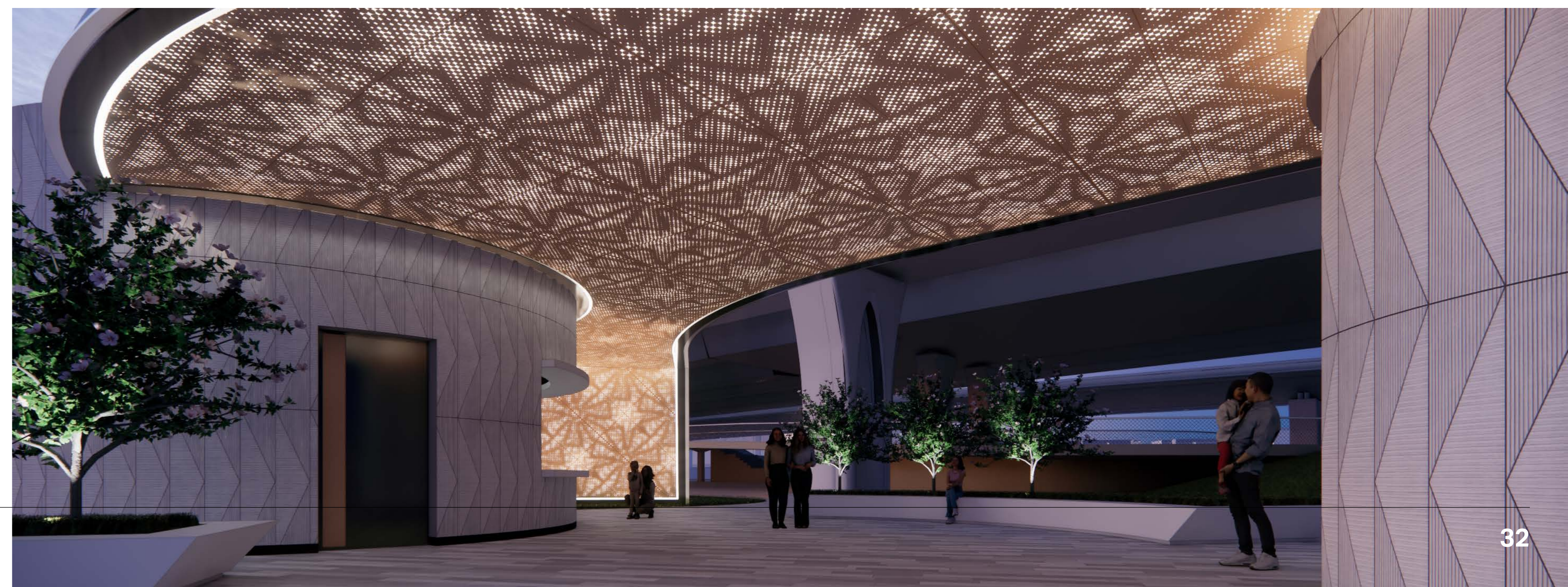
Status:  
In progress





The **I-95 Underdeck** in Miami transforms five sites beneath the new elevated highway into comfort station buildings, anchoring a future linear park in Historic Overtown—one of Miami’s oldest Black communities, long fragmented by past urban renewal and highway construction. The new public space provides an opportunity to repair, reconnect, and celebrate the cultural identity of the city.

Developed in collaboration with local minority-owned firm Design2Form and landscape architects Hargreaves Jones, the new buildings including restrooms, concessions, park operations, a performance stage, and an amphitheater, together establish a unified architectural language that navigates the narrow parcels restricted by a 12-foot offset from the highway while honoring cultural context.





We allowed environmental challenges to become opportunities. With little shade beneath the structure, freestanding canopies were introduced, extending beyond each building to act as thresholds, gathering spaces, and visual markers. Inspired by West African architectural principles, perforated and backlit metal ceilings provide shade by day and ambient light by night.

**The result is a family of buildings that balance utility and beauty, repetition and variation, and contribute to a civic framework that reclaims land as a space of inclusion, identity, and everyday use.**



# Shell LOBP Office and Lab Building

Tarragona, Spain

**Disciplines:**

- Workplace consultancy
- Architecture
- Interiors
- MEP
- Structure

**Status:**

In progress




**Set within an industrial campus, the new laboratory and office building developed for Shell redefines what a workplace can be.**



Designed to bring the comfort and quality of an urban office into a manufacturing setting, it creates a modern environment that supports science, collaboration, and employee well-being.

Shared amenities, such as cafeteria, changing rooms, and green outdoor areas establish a welcoming daily experience, while laboratories and offices above enable high-performing research in a resilient, efficient layout. Natural light, carefully oriented façades, and a balance of durable and colorful finishes enrich both performance and atmosphere.



With its contemporary identity and human-centered approach, the building elevates its industrial surroundings, creating a place where innovation and people thrive side by side.

# Lake County Convention Center

City of Gary, Indiana, USA

**Disciplines:**

- Architecture
- Planning
- Interiors

**Status:**

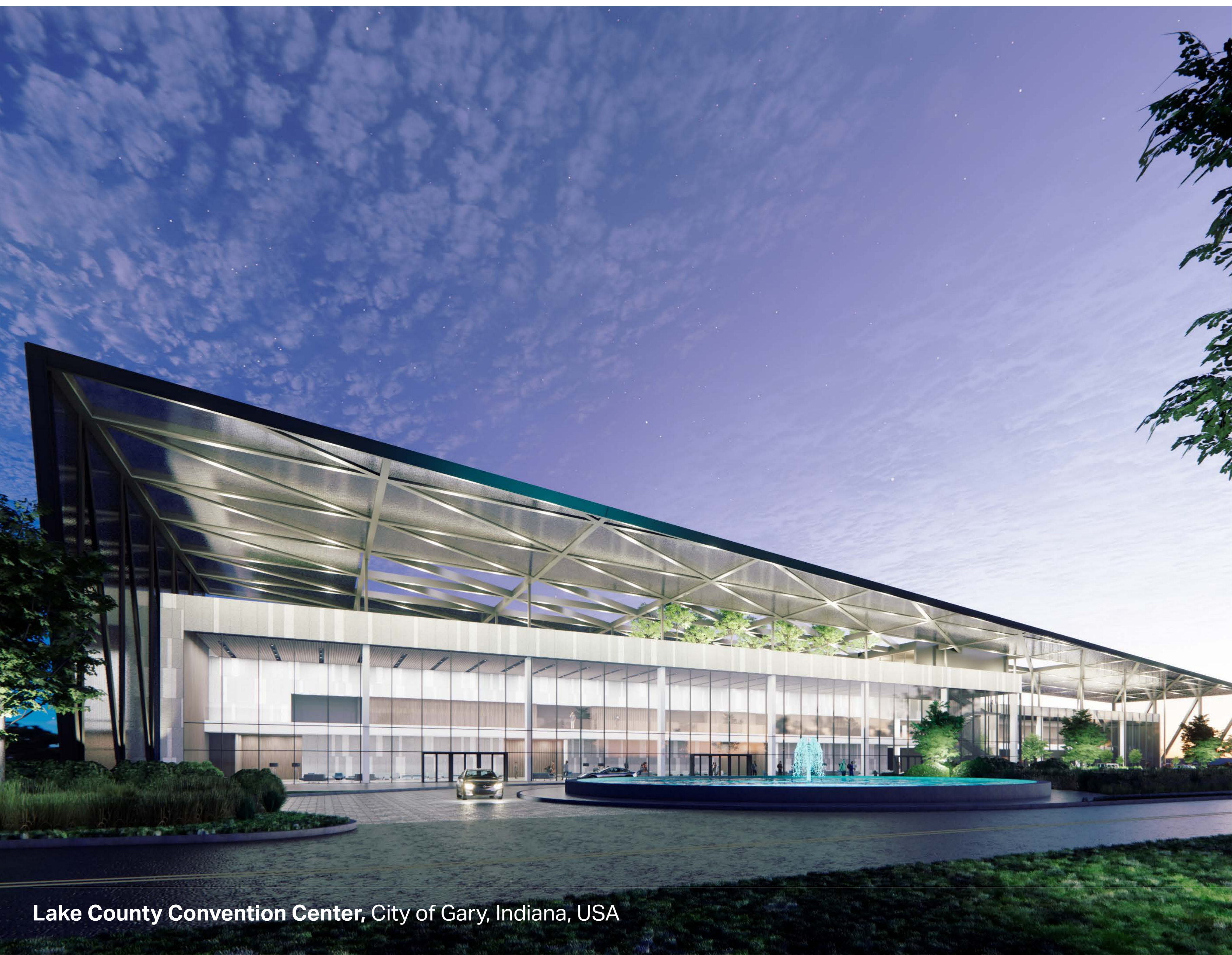
Concept design





**The Lake County Convention Center** in Gary, Indiana, is a transformative new venue developed in partnership with AECOM Hunt the City of Gary, and Hard Rock Casino. Designed as a state-of-the-art destination, it serves as a vibrant hub for community and business engagement, offering flexible spaces for conferences, cultural events, and local gatherings

The design balances modernity with local context, drawing inspiration from Gary's industrial heritage and surrounding landscapes. Exposed steel framing and a large ETFE-clad entry canopy reference the city's steel mill history, while expansive south-facing curtainwalls fill public spaces with natural light. Contrasting materials — steel, wood accents, and large-format stone — anchor the building in its surroundings, creating a welcoming and contemporary aesthetic.



Sustainability is at the forefront of the design, with features such as green roofs, solar panels, and rainwater harvesting systems. These elements not only reduce the building's environmental footprint but also serve as educational components, promoting awareness and stewardship among visitors.



# Area Control Center

Milan, Italy

**Disciplines:**

- Architecture
- Structures

**Status:**

Unbuilt





The new **Area Control Center** at Milan Linate Airport is a flagship initiative for ENAV, Italy's national air traffic control authority. Once completed, the 12,000-square-meter, seven-story building will manage air traffic across North-East area of Italy, supporting more than two million flights annually and strengthening the efficiency and safety of Italy's airspace.

Designed to maximize natural light and optimize solar radiation control, the facility integrates sustainable strategies throughout. Energy modeling informed façade optimization, while triple glazing and locally sourced, eco-friendly materials help reduce carbon dioxide emissions.

**Developed by our multidisciplinary teams in Milan and Madrid leading both preliminary and detailed designs, the Area Control Center will provide a resilient, efficient and future-ready platform for air traffic management, combining technical performance with environmental responsibility.**



# Garrison Entrepôt Tempéré

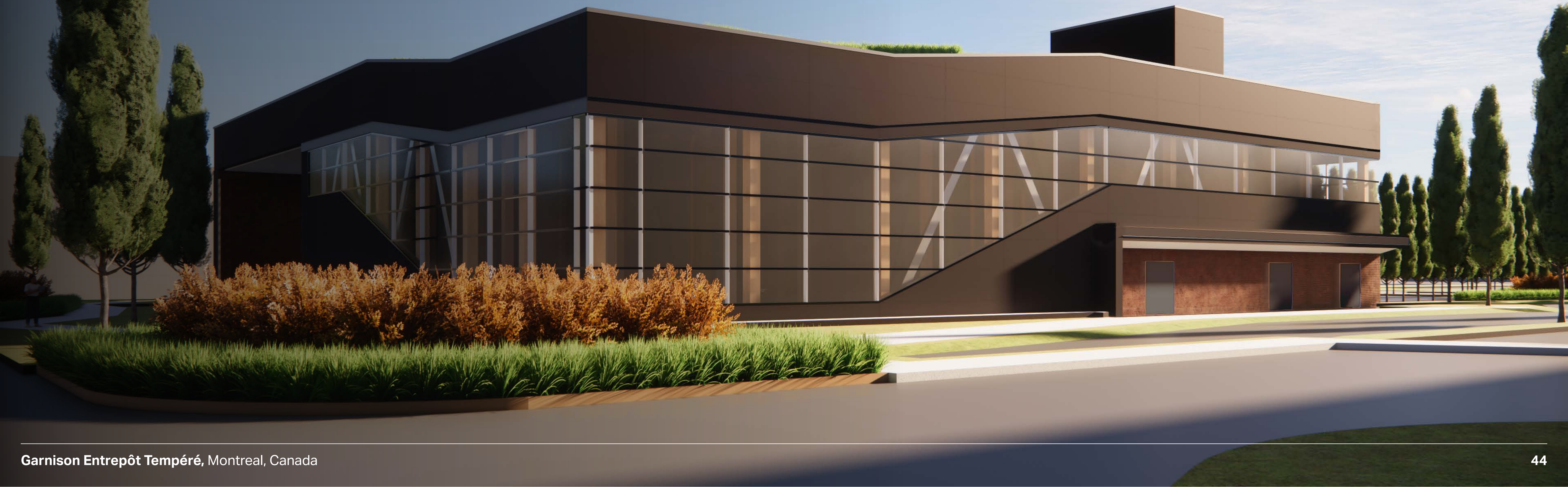
Montreal, Canada

**Disciplines:**

- Architecture
- Landscape architecture
- Structure
- Mechanical
- Electrical

**Status:**

Unbuilt



**The Garnison** is a 2,100 square-meter temperature-controlled warehouse set to be built in Montreal.

Aligned with Vision Garnison Montréal 2042, the design emphasizes sustainability, adaptability and integration with both the natural and urban environment.

Every aspect of the design reflects a strong commitment to environmental responsibility, aiming for a near-zero carbon footprint through the use of innovative materials and construction strategies.

Mass timber and a green roof will form the core of this approach, offering both ecological benefits and architectural distinction.

The design is set to exceed current building code requirements by 30 percent, establishing a new benchmark for energy efficiency and operational resilience. A solar study will inform the use of expansive curtain walls, ensuring employees benefit from natural daylight throughout the day.

Flexibility is also fundamental in enabling the facility to adapt to future changes in equipment, storage methods, and operational needs. This ensures long-term relevance and functionality in a rapidly evolving industrial landscape.

By combining sustainable design with forward-thinking engineering, Garnison is set to reimagine logistics infrastructure in Montreal as greener, more adaptable, and future-ready.



# Galaxy Twin Towers

Shenzhen, Mainland China

**Disciplines:**

- Architecture
- Landscape architecture
- Structure
- Mechanical
- Electrical

**Status:**

Unbuilt




The 356-meter **Shenzhen Galaxy Twin Towers** stand on the city's central axis anchoring the bay area skyline. As a core component of the 1.6-million-square-meter Galaxy WORLD upgrade, the 73-story east and west towers provide over 360,000 square meters of space for high-end offices, corporate headquarters, shared conference centers, restaurants and a rooftop helipad.

Designed as a "three-dimensional city in the sky," the development accommodates nearly 30,000 people through vertically integrated functions and innovative technologies.



Galaxy Twin Towers, Shenzhen, Mainland China

An aerial night view of Shenzhen, China, showcasing the city's skyline. The two prominent Galaxy Twin Towers stand out with their illuminated, curved facades. The surrounding urban landscape is densely packed with high-rise buildings, many of which are also lit up. In the foreground, a large green park area is visible, along with a multi-lane highway with light trails from traffic. The sky is a mix of deep blue and orange, indicating the time is either dusk or dawn. The overall scene depicts a modern, vibrant city integrated with nature.

**The result is a green, healthy and smart super high-rise workplace that brings together nature, architecture and people in a harmonious setting establishing a new benchmark for urban regeneration in Shenzhen's Greater Bay Area.**

# Acknowledgements

**Port of Los Angeles Cruise Terminal, California, USA**

Mark McVay

**Anta Sports Park, Shanghai, Mainland China**

Yuehui Xu

**Royal Jubilee Maternity Hospital, Northern Ireland**

Trevor Leaker, Peter Wilson, Ashleigh Davidson

**The Dynasty, Florida, USA**

Kayla Cox

**Hudson County Fan Plant, New Jersey, USA**

Francis Cooke

**Medical Emergency Services Headquarters, L'Hospitalet de Llobregat, Spain**

Eric Trillo

**Shell Office Building, Baar, Switzerland**

Diana Do Río

**AECOM Chicago Office, Illinois, USA**

Matthew Rebbe

**TerraCanada National Capital Area Component, Ontario, Canada**

Dean Mapeso

**Graham Greenway Underdeck, Florida, USA**

Danny Aguiar

**Shell LOBP Office and Lab Building, Tarragona, Spain**

Javier Díaz

**Lake County Convention Center, Indiana, USA**

Aaron Beyers

**Area Control Center, Milan, Italy**

Davide Degiorgi

**Garrison Entrepôt Tempéré, Montreal, Canada**

Leanne Paquin

**Galaxy Twin Towers, Shenzhen, Mainland China**

Ross Wimer



# Contacts

**Jason Olsen**

Chair, Architecture + Interiors Practice Committee  
jason.olsen@aecom.com

**Ross Wimer**

Architecture Lead  
ross.wimer@aecom.com

**Elvira Munoz**

Transformation and Culture Director  
elvira.munoz@aecom.com

**AECOM** Delivering a  
better world